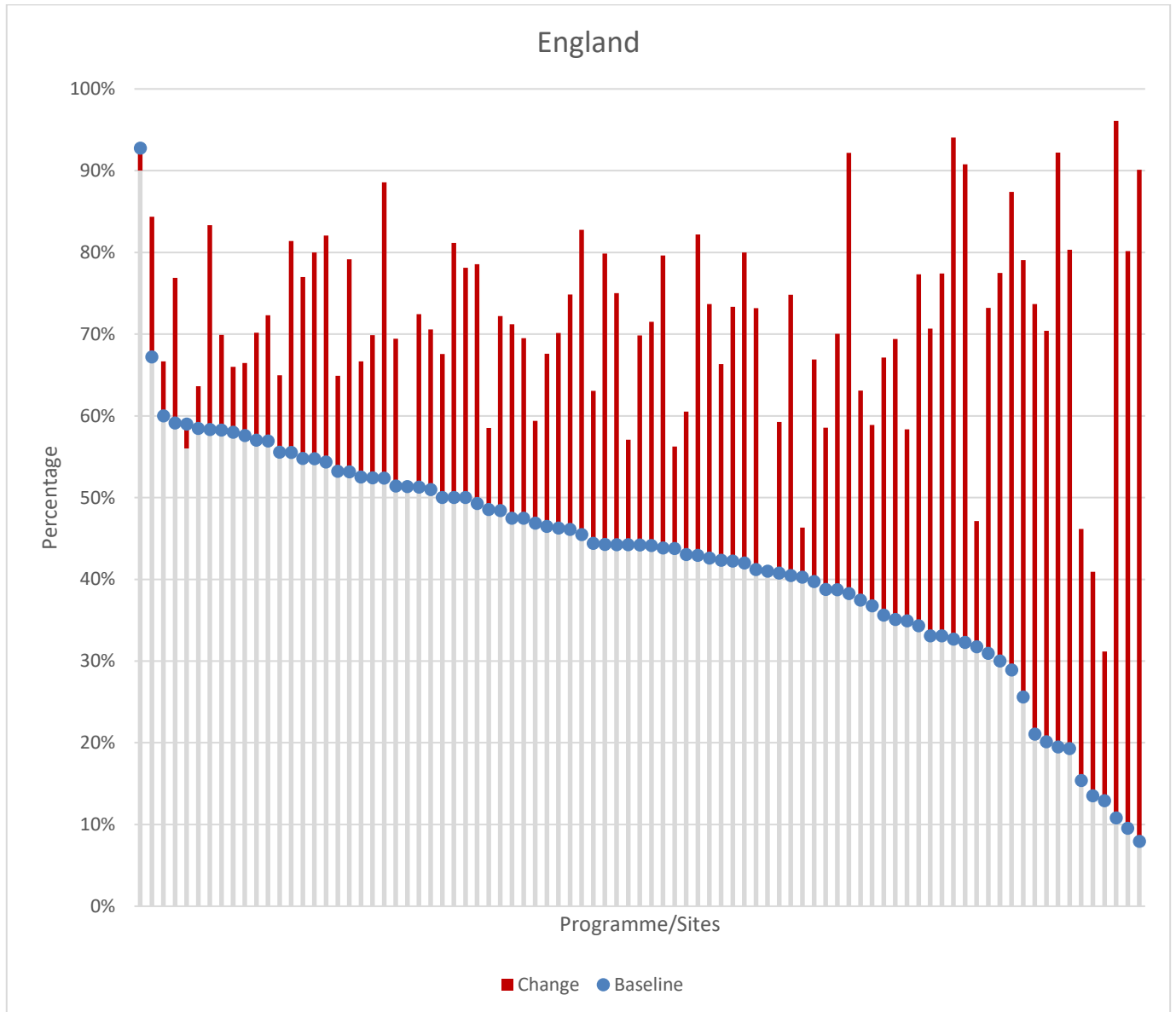


SUPPLEMENT 12

Exercise by Programme

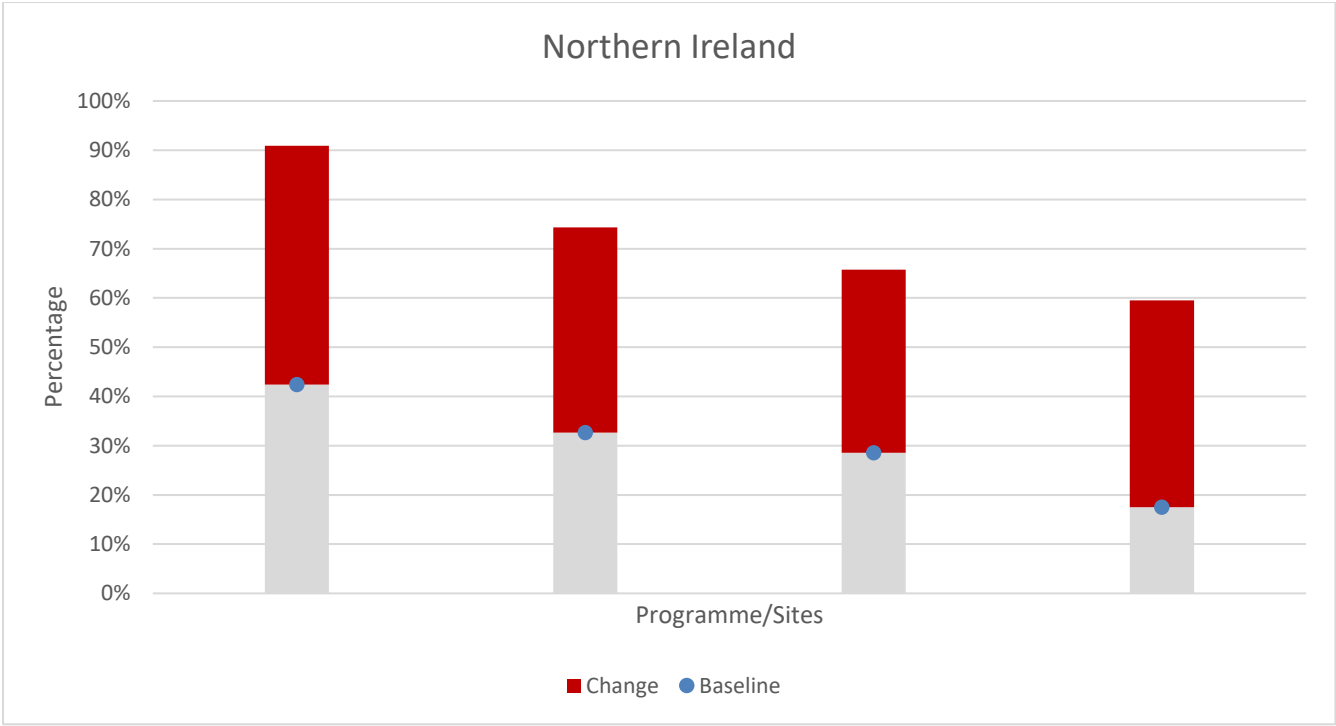
This supplement shows the population's change in 150 minute exercise status post CR, data used was from electronic entry into the NACR from 2015-2016.



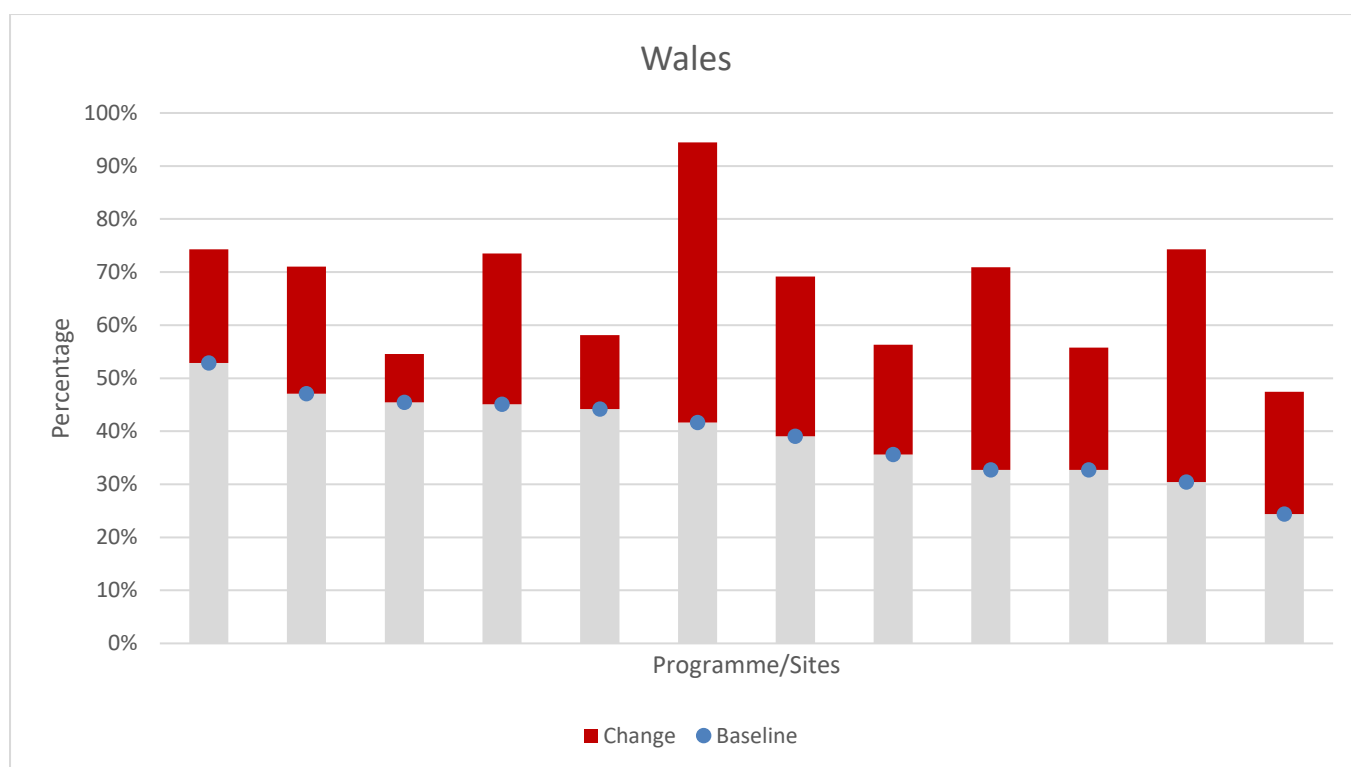
Programme/Site Name	Country	Pre	Post	% Point Change
Barking, Havering and Redbridge Hospitals NHS Trust (King George Hospital)	England	47%	59%	13%
Barking, Havering and Redbridge Hospitals NHS Trust (Queens Hospital)	England	40%	67%	27%
Ashford and St. Peter's Hospital NHS Trust (Ashford and St Peter's)	England	32%	47%	15%
Bedford Hospital NHS Trust	England	10%	80%	71%
Blackpool, Fylde and Wyre Hospitals NHS Foundation Trust	England	49%	59%	10%
Bradford Teaching Hospitals NHS Foundation Trust - Community Cardiac Rehabilitation (St Luke's Hospital/Queensbury Health Centre/Eccleshill Clinic/Bradford Royal Infirmary)	England	51%	51%	0%
Brighton and Sussex University Hospitals NHS Trust (Royal Sussex County Hospital)	England	44%	57%	13%
Buckinghamshire Hospitals NHS Trust	England	49%	79%	29%
Burton Hospitals NHS Trust	England	44%	72%	27%
Calderdale and Huddersfield NHS Foundation Trust	England	48%	72%	24%
Central Manchester and Manchester Children's University Hospitals NHS Trust	England	26%	79%	53%
Chesterfield Royal Hospital NHS Foundation Trust	England	52%	89%	36%
City Health Care Partnership (Hull)	England	35%	58%	23%
Countess of Chester Hospital NHS Foundation Trust	England	20%	70%	50%
Derby Hospitals NHS Foundation Trust (Ilkeston Community Hospital and Royal Derby Hospital)	England	41%	41%	0%
Derbyshire Community Health Services NHS Foundation Trust (Chesterfield and Bolsover)	England	35%	69%	34%
Dorset County Hospital NHS Foundation Trust	England	50%	68%	18%
East and North Hertfordshire NHS Trust (Lister Hospital and Queen Elizabeth II Hospital)	England	56%	81%	26%
East Cheshire NHS Trust	England	46%	68%	21%
East Lancashire Hospitals NHS Trust	England	44%	70%	26%
East Sussex Hospitals NHS Trust (Conquest Hospital)	England	58%	70%	12%
East Sussex Hospitals NHS Trust (Eastbourne District General Hospital)	England	51%	71%	20%
Epsom and St Helier University Hospitals NHS Trust (Epsom Hospital)	England	43%	82%	39%
Epsom and St Helier University Hospitals NHS Trust (St Helier Hospital and Epsom Hospital)	England	60%	67%	7%
Frimley Park Hospital NHS Foundation Trust	England	43%	74%	31%
Gloucestershire Care Services NHS Trust	England	59%	77%	18%
Great Western Hospitals NHS Foundation Trust	England	44%	63%	19%
Guy's and St Thomas' NHS Foundation Trust	England	56%	65%	9%
Hampshire Hospitals NHS Foundation Trust (Alton and Basingstoke & North Hampshire Hospital)	England	33%	77%	44%
Hampshire Hospitals NHS Foundation Trust (Royal Hampshire)	England	47%	71%	24%
Imperial Healthcare NHS Trust (Central, West London and Charing Cross and Ealing Community Cardiac Rehab)	England	14%	41%	27%
Kent Community Health NHS Trust	England	50%	78%	28%
Kettering General Hospital NHS Trust	England	42%	73%	31%

Programme/Site Name	Country	Pre	Post	% Point Change
King's College Hospital NHS Foundation Trust (Princess Royal University Hospital)	England	58%	66%	8%
Lancashire Teaching Hospitals NHS Foundation Trust (Chorley and South Ribble)	England	55%	77%	22%
Lancashire Teaching Hospitals NHS Foundation Trust (Royal Preston Hospital)	England	51%	69%	18%
Luton and Dunstable Hospital NHS Foundation Trust	England	47%	69%	22%
Maidstone and Tunbridge Wells NHS Trust (Maidstone Hospital)	England	19%	80%	61%
Maidstone and Tunbridge Wells NHS Trust (Tunbridge Wells Hospital at Pembury)	England	32%	91%	59%
Mid Yorkshire Hospitals NHS Trust (Dewsbury and District Hospital)	England	58%	83%	25%
North Bristol NHS Trust	England	59%	56%	-3%
North Cheshire Hospitals NHS Trust	England	42%	66%	24%
North Cumbria Acute Hospitals NHS Trust (West Cumberland Hospital)	England	53%	79%	26%
North Cumbria University Hospital Trust (Cumberland Infirmary)	England	51%	72%	21%
Northern Lincolnshire and Goole Hospital NHS Foundation Trust (Scunthorpe General Hospital)	England	39%	59%	20%
Northern Lincolnshire and Goole Hospitals NHS Foundation Trust (Diana Princess of Wales Hospital)	England	46%	70%	24%
Oxford Radcliffe Hospitals NHS Trust (Horton General Hospital and John Radcliffe Hospital)	England	41%	73%	32%
Papworth Hospital NHS Foundation Trust	England	50%	81%	31%
Pennine Acute Hospitals NHS Trust (North Manchester General Hospital)	England	8%	90%	82%
Peterborough and Stamford Hospitals NHS Foundation Trust (Peterborough and City Hospital)	England	44%	56%	13%
Poole Hospital NHS Foundation Trust	England	53%	65%	12%
Portsmouth Hospitals NHS Trust	England	33%	94%	61%
Rotherham NHS Foundation Trust (Rotherham Community Health Centre)	England	40%	46%	6%
Royal Berkshire NHS Foundation Trust (Royal Berkshire Hospital and West Berkshire Community)	England	42%	80%	38%
Royal Brompton and Harefield NHS Trust	England	39%	70%	31%
Royal Free London NHS Foundation Trust (Chase Farm Hospital/Barnet Hospital)	England	45%	83%	37%
Royal Liverpool and Broadgreen University Hospital and NHS Trust (Broadgreen Hospital and Royal Liverpool University Hospital)	England	37%	59%	22%
Royal Surrey County Hospital NHS Trust	England	46%	75%	29%
Royal United Hospital Bath NHS Trust	England	57%	70%	13%
Salisbury NHS Foundation Trust	England	52%	70%	17%
Sherwood Forest Hospitals NHS Foundation Trust (King's Mill Hospital)	England	41%	59%	19%
Solent NHS Trust	England	57%	72%	15%
Southend University Hospital NHS Foundation Trust	England	13%	31%	18%
Southport and Ormskirk Hospital NHS Trust	England	37%	63%	26%

Programme/Site Name	Country	Pre	Post	% Point Change
St George's Healthcare NHS Trust (St George's Hospital/Queen Mary's Hospital)	England	44%	80%	36%
Stockport NHS Foundation Trust	England	54%	82%	28%
The Hillingdon Hospital NHS Trust	England	29%	87%	59%
The Lewisham Hospitals NHS Trust	England	53%	67%	14%
The Royal Wolverhampton Hospitals NHS Trust	England	93%	90%	-3%
The Whittington Hospital NHS Trust	England	33%	71%	38%
Torbay Care Trust	England	19%	92%	73%
University College London Hospitals NHS Foundation Trust	England	30%	78%	48%
University Hospital Of South Manchester NHS Foundation Trust	England	44%	80%	36%
University Hospitals Coventry and Warwickshire NHS Trust (Hospital of St Cross)	England	40%	75%	34%
University Hospitals Coventry and Warwickshire NHS Trust (University Hospital, Coventry)	England	36%	67%	32%
University Hospitals Of Leicester NHS Trust (Glenfield Hospital, Leicester General Hospital and Leicester Royal Infirmary)	England	43%	61%	18%
Warrington and Halton Hospitals NHS Foundation Trust	England	58%	64%	5%
West Suffolk Hospitals NHS Trust	England	55%	80%	25%
Western Sussex Hospitals NHS Foundation Trust (St Richards)	England	44%	75%	31%
Weston Area Health NHS Trust	England	67%	84%	17%
Wirral Community NHS Foundation Trust (Wirral Heart Support Centre)	England	34%	77%	43%
Worcestershire Acute Hospitals NHS Trust (Alexandra Hospital/Evesham Cardiac Rehab)	England	11%	96%	85%
Worcestershire Acute Hospitals NHS Trust (Kidderminster Hospital)	England	38%	92%	54%
Worthing and Southlands Hospitals NHS Trust	England	58%	66%	9%
York Teaching Hospital NHS Foundation Trust (Scarborough/Whitby/Ryedale/Whitby Community Hospital)	England	21%	74%	53%
York Teaching Hospital NHS Foundation Trust (York Hospital)	England	15%	46%	31%
Your Healthcare CIC (Surbiton Hospital)	England	31%	73%	42%



Programme/Site Name	Country	Pre	Post	% Point Change
Belfast Health and Social Care Trust (Belfast City Hospital)	Northern Ireland	33%	74%	42%
Northern Health and Social Care Trust (Mid-Ulster Hospital)	Northern Ireland	29%	66%	37%
South Eastern Health and Social Care Trust (Downe Hospital)	Northern Ireland	42%	91%	48%
South Eastern Health and Social Care Trust (Ulster Hospital)	Northern Ireland	18%	60%	42%



Programme/Site Name	Country	Pre	Post	% Point Change
Abertawe Bro Morgannwg University Health Board (Morrison Hospital, Singleton Hospital)	Wales	39%	69%	30%
Abertawe Bro Morgannwg University Health Board (Neath/Port Talbot Hospital)	Wales	33%	56%	23%
Abertawe Bro Morgannwg University Health Board (Princess of Wales Hospital)	Wales	45%	74%	28%
Aneurin Bevan University Health Board (County Hospital)	Wales	44%	58%	14%
Aneurin Bevan University Health Board (Nevill Hall Hospital)	Wales	30%	74%	44%
Aneurin Bevan University Health Board (St Woolos Hospital)	Wales	47%	71%	24%
Aneurin Bevan University Health Board (Ysbyty Ystrad Fawr)	Wales	36%	56%	21%
Betsi Cadwaladr University Health Board (Wrexham Maelor Hospital, East Cardiac Rehabilitation Service)	Wales	24%	47%	23%
Betsi Cadwaladr University Health Board (Ysbyty Glan Clwyd & Llandudno)	Wales	42%	94%	53%
Cardiff and Vale University Health Board (University Hospital of Wales, Llandough Hospital)	Wales	53%	74%	21%
Cwm Taf University Health Board (Prince Charles Hospital)	Wales	33%	71%	38%
Hywel Dda University Health Board (Bronglais Hospital)	Wales	45%	55%	9%

Programme/Site Name	Country	Pre	Post	% Point Change
Isle of Man (Nobles Hospital)	Other	52%	93%	41%